

# TETRA-CHEM INDUSTRIES LTD.



SPECIALTY  
CHEMISTRY

INNOVATIVE  
ENGINEERING

APPLICATION  
TECHNOLOGY

WASTE MANAGEMENT  
SERVICES

71 JOHN ST. E., BRIGHT, ON CANADA NOJ 1B0

TEL: (519) 454-4370 (888) 658-5515 FAX: (519) 454-4362  
WEB SITE: [www.tetra-chem.com](http://www.tetra-chem.com) EMAIL: [info@tetra-chem.com](mailto:info@tetra-chem.com)

Check out our Web Site !  
[www.tetra-chem.com](http://www.tetra-chem.com)

## PRODUCT APPLICATION PRESENTATION

### TCI 100 H.D.<sup>TM</sup>

#### BROAD SPECTRUM SOLVENT DEGREASER CONCENTRATE

**PRODUCT IDENTIFIER:**

**PROCESS IDENTIFIER:**

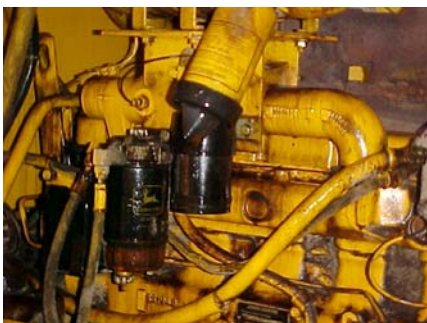
**PRODUCT PRESENTATION:**

**TCI 100 H.D.** is a concentrated, high flash point, non-corrosive amber liquid formulation incorporating pure natural orange extract hydrocarbon solvents, biodegradable detergents and emulsifiers for broad spectrum degreasing of all types of metal and non-metal surfaces. It quickly penetrates the organic and aqueous soil structure and breaks it up into emulsifiable particles for easy rinsing with hot or cold water.

**PACKAGING:** 04, 25, 205 L



**BEFORE**



**AFTER**



**PROCESS INTRODUCTION:**

**TCI 100 H.D.** is designed for brushless degreasing when applied via the spray-on and wipe-off method or our MANUFACTURER'S approved CHEMICAL APPLICATOR SYSTEM (See Brochure). Spray a light mist directly from the shipping container onto the surface to be cleaned.

A cold or hot water high pressure (1500-3000 psi) rinse of the dissolved soil matrix assures film free results even in critical locations.

**TCI 100 H.D.** is a gentle, fast, efficient and very powerful solvent for oil-grease-tar-bitumen emulsification. The chemical solution rinses film free thus rendering the exposed surfaces passified against chemical deterioration. This formulation is superior in cleaning performance and safety when compared to alkali or petroleum distillate degreasers.

**PROCESS SPECIFICITY:**

**TCI 100 H.D.** may be applied in the INDUSTRIAL SETTING, AVIATION, AGRICULTURAL and AUTOMOTIVE INDUSTRY on equipment, where oil, grease, varnish, bituminous deposits (ie. tar & asphalt), baked-on hydrocarbons and exhaust soot (ie. diesel edge) are problems, and on residual glue stains after decals have been removed. In the construction industry, it will remove protective surface coatings from overseas shipments without agitation, wet oil and latex paint from brushes, trays and rollers; removes oil stains from concrete garage floors and interlocking brick drive ways; bituminous deposits from aluminum siding, brick, stone and concrete. Some heavy stubborn applications require hand/brush agitation. Wipe with a wet rag or simply rinse with a mechanical water spray. The entire complex is emulsifiable in hot or cold water. Leaves no undesirable film on any surface. Prevents fisheye formation when painting or re-painting surfaces. Short exposure is harmless to paint.

Pre-test on painted surfaces before use  
ie. painted graphics.

The overall versatility means enormous time and labor savings.

**Images Compliments of  
Verspeeten Cartage Ltd.**

PLEASE CALL OUR **TECHNICAL SUPPORT LINE @ 1-888-658-5515** FOR SOLUTIONS TO YOUR INDUSTRY.

**FOR INDUSTRIAL AND INSTITUTIONAL USE ONLY**

**THE INFORMATION GIVEN HEREIN IS GIVEN IN GOOD FAITH BUT NO WARRANTY, EXPRESSED OR IMPLIED IS MADE**